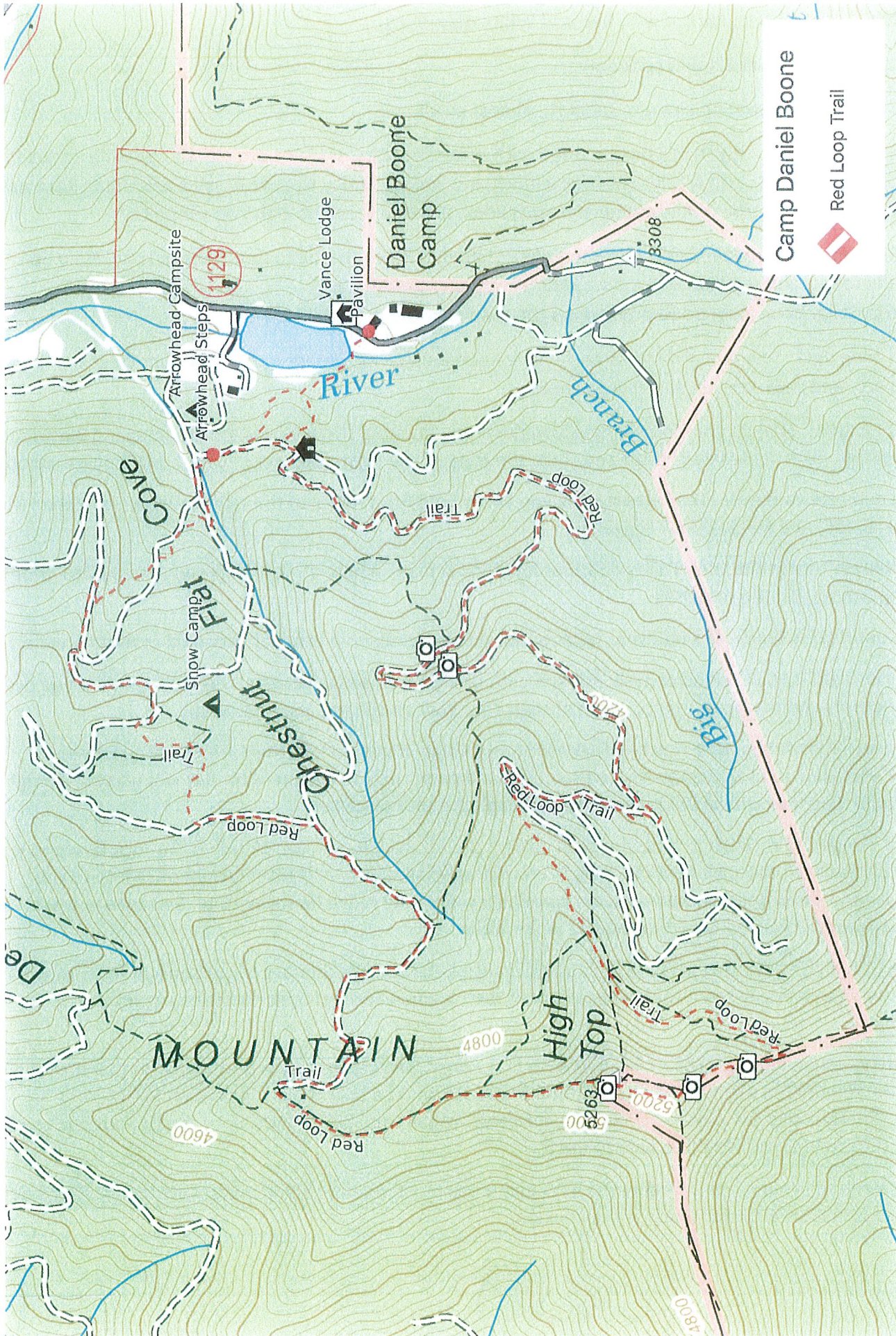


(OVER)



2.0 km
1.5
1.0
0.5

1.2 mi
1.1
1.0
0.9
0.8
0.7
0.6
0.5
0.4
0.3
0.2
0.1

Scale 1:12000 1 inch = 1000 feet

Mercator Projection
WGS84
UTM Zone 17S
CALTOPO

CDB Pavilion to High Top, (elev. 5,243)

Trail Length: 6.4 miles total; marked with Red and White diamonds

Time: 2-3 hours up; another 2 hours back down

Trail rating: Strenuous; elevation change: 1,883 ft., almost all up

This is a challenging hike, but you will be rewarded with some spectacular views of Cold Mt., Shining Rock Ledge, Sam Knob, Little Sam Knob, and Mt. Hardy. Pack a lunch and you can enjoy beautiful vistas of Shining Rock and Middle Prong Wilderness areas while eating on Lunch Rock, 0.2 mile south of High Top summit.

- 0.0 **Begin at Pavilion in Main Camp. Walk to Chip's Chapel, follow red trail to Boonesboro road. **Now you should follow the red and white diamonds all the way to High Top.****
Pass through Boonesboro and proceed up the road past the flagpole.
- 0.5 Pass a log deck. Several buildings at camp have been built using lumber harvested from trees on the property and sawn on this portable sawmill.
- 1.0 Trail Junction. Trail on your left will take you down towards the showhouses and Apache and Blackfoot campsites. Both center trails dead end. Take the road to the right, following the red and white diamonds.
- 1.2 Stop and look to the NE. The highest peak you see is Cold Mt. farther to the right is Deep Gap, Stairs Mt. (elev. 5,764) and Shining Rock Ledge.
- 2.1 Big hairpin turn in the trail. This is a former log deck. A place where 16-foot logs were stockpiled prior to being trucked off the mountain.
- 2.2 On your right is Bradford's Bathtub. Year-round, this watering hole is full of very cold mountain water.
- 2.5 On your right is the Connector Trail, marked with orange and white flagging. This trail will take you over to another road that leads to northside of High Top. Stay on the red and white trail.
- 3.2 Congratulations! You have reached Fork Mountain Ridge. If you go left, the Forest Service Ridge Trail will take you to Birdstand Mt. (elev. 5,292) and eventually to Ivestor Gap. But you want to go right, still following the red and white diamonds through the rhodo thicket.
- 3.4 After wandering through a rhododendron and Mt. laurel thicket, you can climb up the rock face and you will have arrived at Lunch Rock. Looking S, you will see Sam Knob, and Little Sam Knob. More to the SW, is Mt. Hardy. You may also see cars traveling on the Blue Ridge Parkway. After you take in the amazing view, proceed N on the red and white trail.
- 3.5 Look to the NW from this great vista. In the distance is TN and the Smokey Mountains. In front of you is the drainage that will run into the West Fork of the Pigeon River and then into Lake Logan, and on to Canton.
- 3.6 You have arrived at High Top, (elev. 5,243). A U.S. Forest Service fire tower used to sit on this site. You will see the foundation blocks the tower's metal frame sat on. The tower was dismantled in the early '70s. You may also see some remnants from towers' occupants. CDB is located to the NE, but due to all the tree growth, you won't be able to see it.

Now you may retrace your steps or follow the R/W diamonds north to Putin's Pod and follow the trail back down to Arrowhead campsite and then finish at the Pavilion.

(OVER)